

Carving a colorful world

Unlimited New View



Background

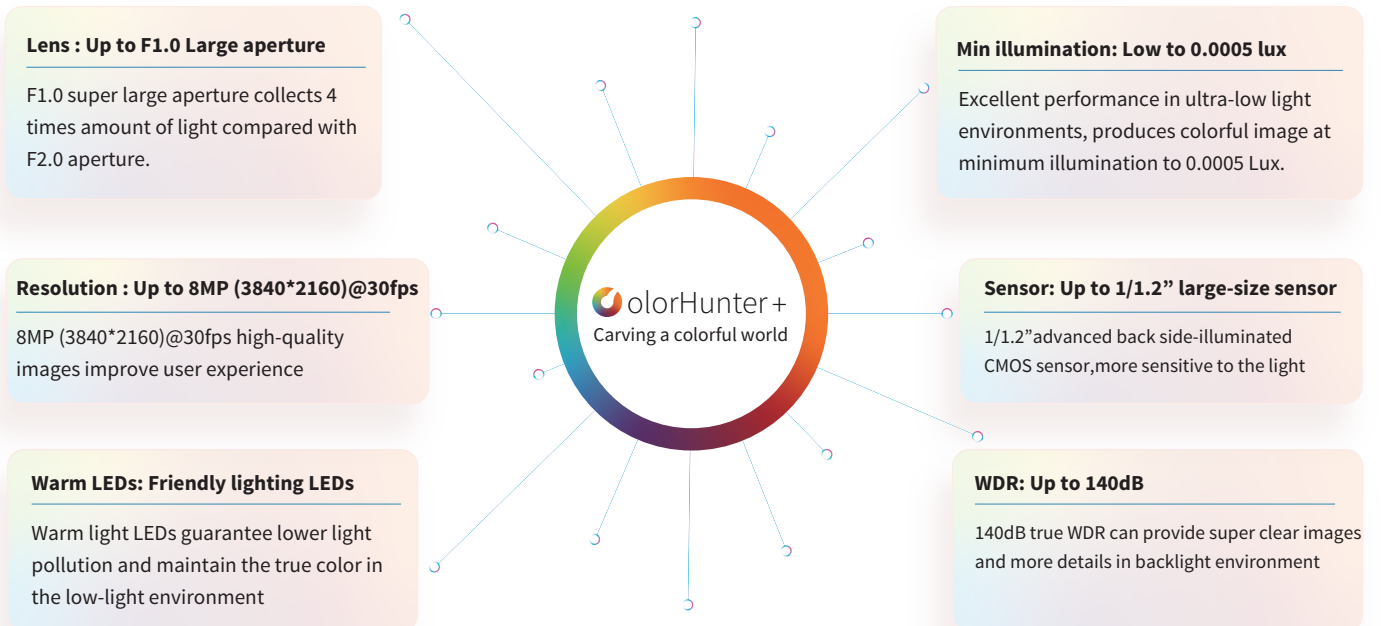
In the field of video security, color-related information is crucial for identifying details of an event, especially at night. Conventional cameras with infrared illumination can only provide black and white images for nighttime surveillance. As a result, people, vehicles or other important objects can easily blur and blend into the background, which makes it difficult to distinguish key elements.

Uniview has launched the brand ColorHunter series which guarantee video with colorful details when you need them. In addition, the ColorHunter camera can also work with smart intrusion prevention to further enhance the probability and accuracy of feature extraction.



Technical Features

The ColorHunter performance is supported by these hardware breakthrough: Super large aperture, progressive BSI Sensor and friendly lighting LEDs. With ColorHunter technology, users can get crisp and authentic full color footage at night.



ColorHunter+ Series

Based on ColorHunter technology and with the improvement of hardware, Uniview has launched ColorHunter+ series: ColorHunter+Dual lens camera, ColorHunter+Varifocal camera, and ColorHunter+4K camera.



ColorHunter+ Dual lens
Catch color from wider view



ColorHunter+ Varifocal
Catch color from faraway

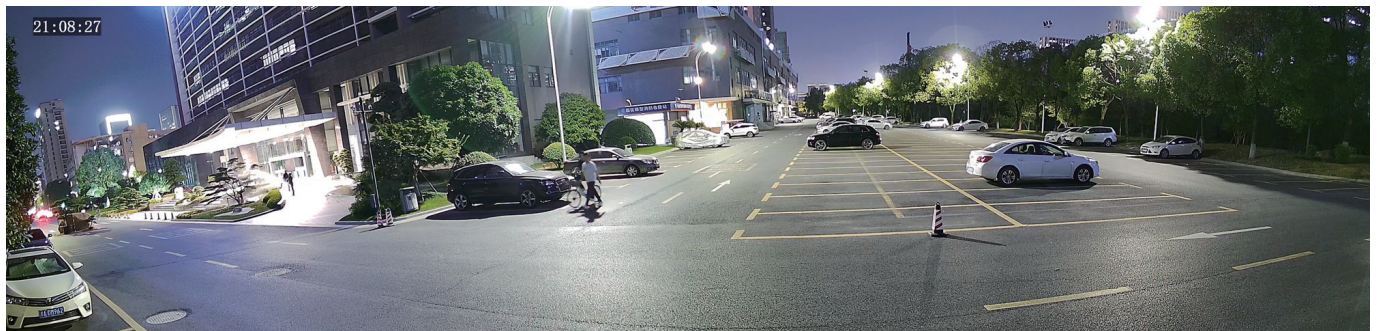


ColorHunter+ 4K 1/1.2" sensor
Catch vibrant color to every detail



COLORHUNTER + DUAL LENS

With image stitching technology based on fusion algorithm, UNV ColorHunter+ dual-lens cameras can achieve a 32:9 ratio and 160° ultra-wide field of view at night that used to require multiple cameras. It can record the movement of the target all the way while unaffected by image distortion.



COLORHUNTER + VARIFOCAL

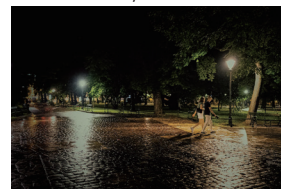
The ColorHunter + varifocal camera has 2.8~12mm automatic focus and zoom lens, which can quickly autofocus in use and easily zoom in to see image details, and capture clear images of distant objects.



COLORHUNTER + 4K

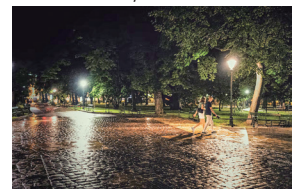
When ColorHunter meets 4K ultra HD, the cameras can capture vibrant colorful image to every detail. 4K ultra HD, 1/1.2" large-size sensor provides vivid and colorful image even when the supplementary warm LEDs are off.

1/1.8"



Conventional 4K Camera

1/1.2"



ColorHunter+ 4K Camera

Intelligent Functions

Powered by deep learning, easy target classification

UNV deep learning algorithm did a great number of training through neural network so that the IP cameras are able to realize accurate target classification. Target classification and attributes recognition are the most valuable effects which deep learning technology owns for the security industry.

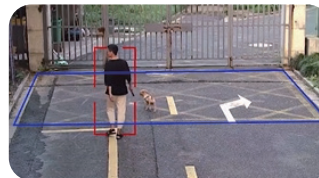
Depth analysis is performed on the objects detected in the video, classify the human and vehicle target and automatically filter out false alarms caused by animals, rustling leaves, bright lights, rain or snow, etc., greatly improve alarm accuracy rate.



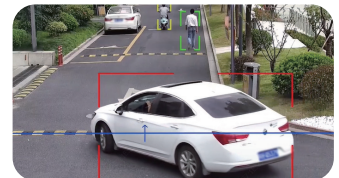
Smart intrusion prevention

- Traditional intrusion detection or crossing line detection is not accurate in some circumstances. For example, it will be mistakenly triggered by animals.
- Based on target classification, UNV Smart intrusion prevention can classify human, vehicle, or other moving objects based on preset settings, reduce false alarm rates.
- Event quick retrieval with NVR. Alarm events are sorted by target type (human, vehicle) which highly improves search efficiency.

Intrusion Detection



Crossing Line



Ultra motion detection

- Ultra motion detection (UMD) can filter objects based on motion detection, detect motion of specified object types in the image, and trigger an alarm when such motion is detected.
- Support three target detection object types: Motor vehicle, non-motor vehicle, pedestrian.
- Much more accurate and efficient than traditional motion detection.

Pedestrian



Non-motor vehicle



Specifications

ColorHunter Series



IPC2224SE-DF40(60)K-WL-IO
IPC3634SE-ADF28(40)K-WL-IO
4MP HD ColorHunter Fixed Network Camera

- 1/1.8" progressive scan CMOS
- 4MP(2688*1520)@30/25fps
- Color:0.0005 Lux@ (F1.0,AGC ON)
- Bullet:4.0/6.0mm,Fixed
- Turret:2.8/4.0mm,Fixed
- Smart intrusion prevention
- Support 120dB true WDR
- Support 9:16 corridor mode
- IP67/IK10



IPC2225SE-DF40(60)K-WL-IO
IPC3615SE-ADF28(40)KM-WL-IO
5MP HD Intelligent ColorHunter Fixed Network Camera

- 1/2.7" progressive scan CMOS
- 5MP (2880*1620)@25fps
- Color:0.0005 Lux@ (F1.0,AGC ON)
- Bullet: 4.0/6.0mm,Fixed
- Turret: 2.8/4.0mm,Fixed
- Smart intrusion prevention
- Support 120dB true WDR
- Turret: Built-in Mic
- Bullet: IP67/IK10,Turret: IP67



IPC1218SE-ADF28(40)KM-WL-IO
IPC3618SE-ADF28(40)KM-WL-IO
8MP HD Intelligent ColorHunter Fixed Network Camera

- 1/2.8" progressive scan CMOS
- 8MP(3840*2160)@20fps
- Color: 0.0005 Lux@ (F1.0,AGC ON)
- 2.8/4.0mm,Fixed
- Smart intrusion prevention
- Support 120dB true WDR
- Built-in Mic
- IP67



IPC2228SE-DF40(60)K-WL-IO
IPC3638SE-ADF28(40)K-WL-IO
8MP HD Intelligent ColorHunter Fixed Network Camera

- 1/1.8" progressive scan CMOS
- 8MP (3840*2160)@ 30(AI off)/25fps
- Color: 0.0005 Lux@ (F1.0,AGC ON)
- Bullet: 4.0/6.0mm,Fixed
- Turret: 2.8/4.0mm,Fixed
- Smart intrusion prevention
- Support 120dB true WDR
- IP67/IK10



ColorHunter+ Series



IPC2K24SE-ADF40KMC-WL-IO
4MP HD ColorHunter Wide Angle Fixed Bullet Network Camera

- 1/2.9" progressive scan CMOS
- 4MP(3840*1080)@25fps
- Color:0.0005 Lux@ (F1.0,AGC ON)
- 2*4.0mm,Fixed
- Human body detection
- Built-in speaker and 2 Mics
- Micro SD, up to 256GB
- IP67

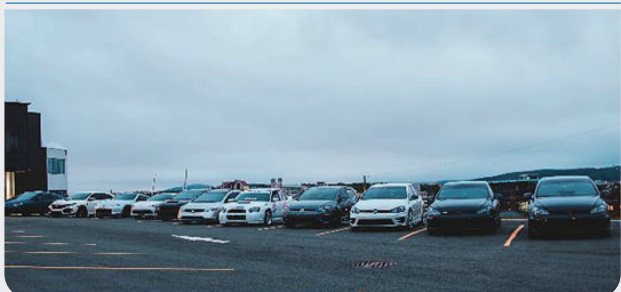


IPC2324SE-ADZK-WL-IO
IPC3634SE-ADZK-WL-IO
4MP HD Intelligent Dual Illuminators ColorHunter VF Network Camera

- 1/1.8" progressive scan CMOS
- 4MP (2688*1520)@ 30/25fps
- Color: 0.0005 Lux@ (F1.2,AGC ON)
- 2.8 ~ 12mm, Motorized
- Smart intrusion prevention
- Support 120dB true WDR
- Bullet: Built-in 2 Mics
- Turret: Built-in Mic
- Micro SD, up to 256GB
- IP67/IK10



Application Scenarios



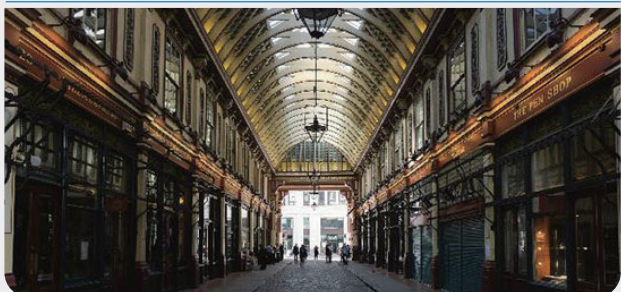
Parking Lot

- Obtain vehicle color information and details in low-light environments
- Warm LEDs won't disturb the driver's eyes and vision



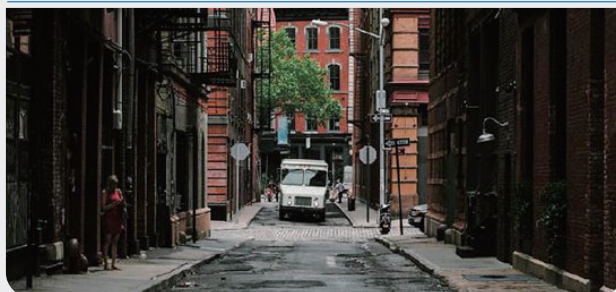
Factory

- 24/7 colorful monitoring guard in the factory
- Friendly warm LEDs can act as a lamp



Market Entrance

- See wide views by one camera at entrance of hotel
- Provide colorful information of intruders for investigation



Alley

- 24/7 colorful monitoring and focus on vehicle
- Catch more color information and details of criminals



www.uniview.com

Sales: overseasbusiness@uniview.com
Technical Support: globalsupport@uniview.com

2022.25 OM-2005802-SD-V2.0

Disclaimer: All rights reserved, including final interpretation and content amendent.