

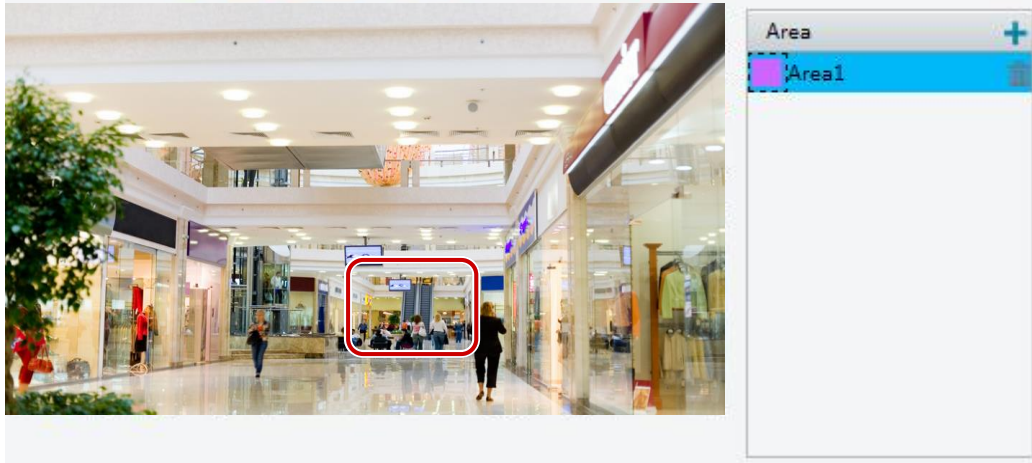
How to set ROI?



Answer:

When Region of Interest (ROI) is enabled, the system ensures image quality for ROI first if the bit rate is insufficient.

Note: Only some certain models support this function. Please see the actual model for details.

1. Click **Setup > Video & Audio > ROI**.



2. Click  , and then drag the mouse to cover the intended part of the images. To delete, select the area and then click  .