

# 4\*5MP ColorHunter MultiView Wise-ISP VF IR Dome Network Camera

IPC8645EA-ADZKM-I1



## Features

- One IP with four channels
- Support multiple intelligent functions, different function of each channel can be enabled at the same time to satisfy various analysis requirement
- Pan, tilt, rotation angle of each lens can be adjusted independently, suitable for more complicated scenes
- 4 channel video output, 2880\*1620@30fps in the main stream of each channel, provide high definition image
- Ultra 265, H.265, H.264, MJPEG
- Smart intrusion prevention, support false alarm filtering, realize accurate detection based on specific target
- People Counting, support people flow counting and crowd density monitoring, suitable for different statistical scenarios
- LightHunter technology ensures ultra-high image quality in low illumination environment
- Up to 130 dB Optical WDR (Wide Dynamic Range)
- IP67 ingress & IK10 protection

## Specifications

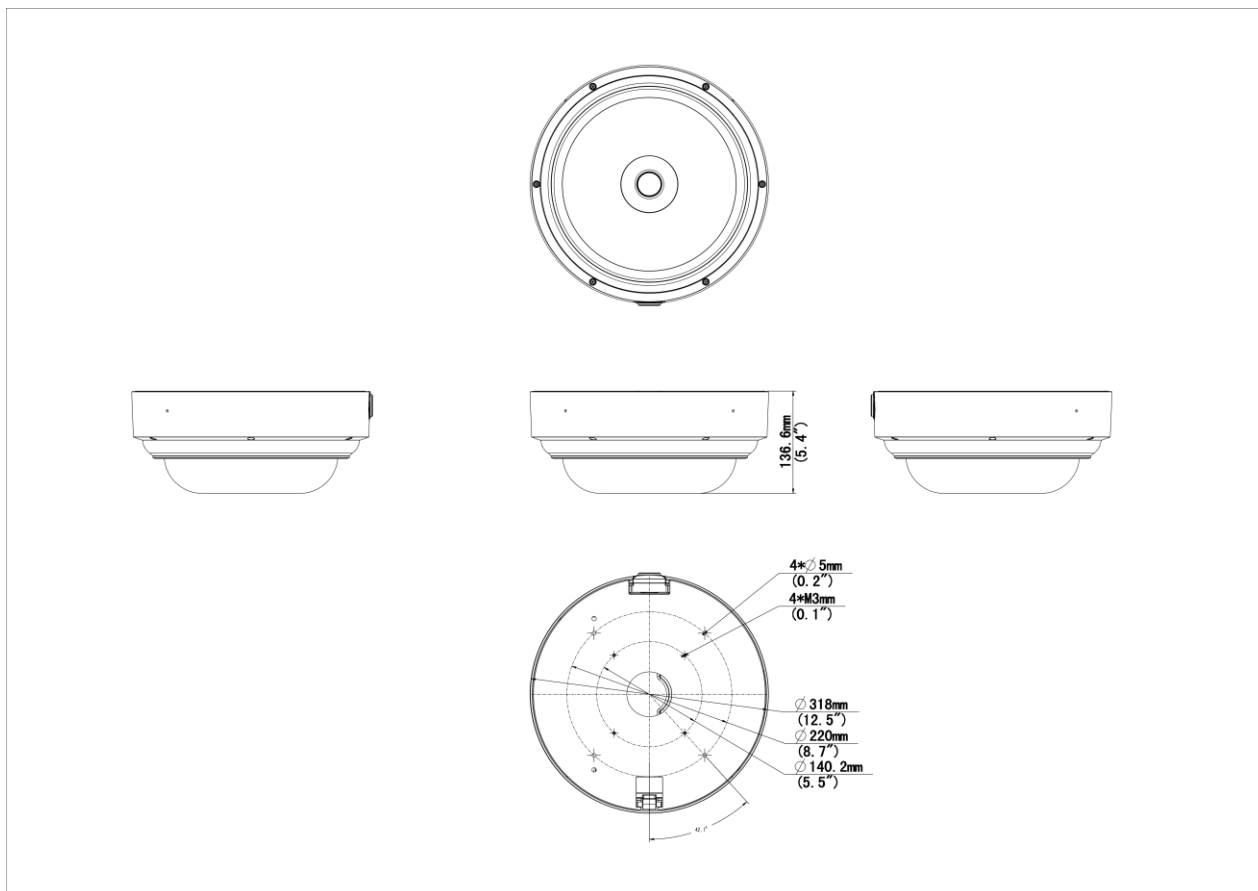
|                            |                                                                                                                                                                                      |
|----------------------------|--------------------------------------------------------------------------------------------------------------------------------------------------------------------------------------|
| Model                      | IPC8645EA-ADZKM-I1                                                                                                                                                                   |
| Camera                     |                                                                                                                                                                                      |
| Sensor                     | 1/2.7" CMOS                                                                                                                                                                          |
| Min. Illumination          | Colour: 0.002 lux (F1.2, AGC ON)<br>0 lux with IR on                                                                                                                                 |
| Day/Night                  | IR-cut filter with auto switch (ICR)                                                                                                                                                 |
| WDR                        | 130 dB                                                                                                                                                                               |
| Adjustment Angle           | Pan: 0° ~ 360°, Tilt: 0° ~ 65°, Rotate: 0° ~ 355°                                                                                                                                    |
| S/N                        | >56 dB                                                                                                                                                                               |
| Lens                       |                                                                                                                                                                                      |
| Focal Length               | 2.7 to 13.5 mm                                                                                                                                                                       |
| Optical Zoom               | 5X                                                                                                                                                                                   |
| Iris                       | F1.2 * 4                                                                                                                                                                             |
| Field of View (H)          | (W)110.3°~(T)31°                                                                                                                                                                     |
| Field of View (V)          | (W)57.1°~(T)17.5°                                                                                                                                                                    |
| Field of View (D)          | (W)130.2°~(T)67.4°                                                                                                                                                                   |
| Iris Type                  | Fixed                                                                                                                                                                                |
| DORI                       |                                                                                                                                                                                      |
| DORI Distance (Detect)     | 70.9m~247.5m(232.5ft~812.0ft)                                                                                                                                                        |
| DORI Distance (Observe)    | 28.4m~99.0m(93.0ft~324.8ft)                                                                                                                                                          |
| DORI Distance (Recognize)  | 14.2m~49.5m(46.5ft~162.4ft)                                                                                                                                                          |
| DORI Distance (Identify)   | 7.1m~24.8m(23.3ft~81.2ft)                                                                                                                                                            |
| Illuminator                |                                                                                                                                                                                      |
| Illumination Distance (IR) | 50 m (164.0 ft)                                                                                                                                                                      |
| IR On/Off Control          | Auto/Manual                                                                                                                                                                          |
| Intelligent                |                                                                                                                                                                                      |
| Exception Detection        | Scene Change, Defocus Detection, Object Removed, Object Left Behind                                                                                                                  |
| Smart Intrusion Prevention | Cross line detection, intrusion detection, enter area detection, leave area detection (support false alarm filtering and the classification of human, non-motor vehicle and vehicle) |

|                              |                                                                                                                                                                                                            |
|------------------------------|------------------------------------------------------------------------------------------------------------------------------------------------------------------------------------------------------------|
| People Counting              | Support People Flow Counting and Crowd Density Monitoring                                                                                                                                                  |
| Events                       |                                                                                                                                                                                                            |
| Motion Detection             | Support                                                                                                                                                                                                    |
| Tampering Detection          | Support                                                                                                                                                                                                    |
| Audio Detection              | Support                                                                                                                                                                                                    |
| UMD (Ultra Motion Detection) | Support                                                                                                                                                                                                    |
| Image                        |                                                                                                                                                                                                            |
| Flip                         | Normal, Flip Vertical, Flip Horizontal, 180°, 90° Clockwise, 90° Anti-clockwise                                                                                                                            |
| Defog                        | Digital Defog                                                                                                                                                                                              |
| Network                      |                                                                                                                                                                                                            |
| Protocols                    | IPv4, IPv6, IGMP, ICMP, ARP, TCP, UDP, DHCP, PPPoE, RTP, RTSP, RTCP, RTMP, DNS, DDNS, NTP, FTP, UPnP, HTTP, HTTPS, SMTP, 802.1x, SNMP, QoS, SSL/TLS, SSH                                                   |
| Compatible Integration       | ONVIF (Profile S, Profile G, Profile T, Profile M), API, SDK                                                                                                                                               |
| User/Host                    | Up to 32 users. 3 user levels: administrator, common user and operator                                                                                                                                     |
| Security                     | Password protection, Strong password, HTTPS encryption, Export operation logs, Basic and Digest Authentication for RTSP, Digest Authentication for HTTP, TLS 1.2, WSSE and Digest Authentication for ONVIF |
| Web Browser                  | Plug-in required live view: IE 10+, Chrome 45+, Firefox 52+, Edge 79+, Plug-in free live view: Chrome 57+, Firefox 58+, Edge 16+                                                                           |
| Storage                      |                                                                                                                                                                                                            |
| Edge Storage                 | Micro SD, up to 512 GB                                                                                                                                                                                     |
| Network Storage              | ANR, NAS (NFS)                                                                                                                                                                                             |
| Video                        |                                                                                                                                                                                                            |
| Video Compression            | Ultra 265, H.265, H.264, MJPEG                                                                                                                                                                             |
| H.264 Code Profile           | Baseline profile, Main profile, High profile                                                                                                                                                               |

|                           |                                                                                                                                                                                                                                                                                                                     |
|---------------------------|---------------------------------------------------------------------------------------------------------------------------------------------------------------------------------------------------------------------------------------------------------------------------------------------------------------------|
| Frame Rate-Main Stream    | Channel * 4<br>5MP (2880*1620), Max 30fps;<br>4MP (2688*1520), Max 30fps;<br>4MP (2560*1440), Max 30fps;<br>3MP (2304*1296), Max 30fps;<br>1080P (1920*1080), Max 30fps;<br>720P (1280*720), Max 30fps;<br>D1 (720*576), Max 30fps;<br>640*360, Max 30fps;<br>2CIF(704*288), Max 30fps;<br>CIF(352*288), Max 30fps; |
| Frame Rate-Sub Stream     | Channel * 4<br>1080P (1920*1080), Max 30fps;<br>720P (1280*720), Max 30fps;<br>D1 (720*576), Max 30fps;<br>640*360, Max 30fps;<br>2CIF(704*288), Max 30fps;<br>CIF(352*288), Max 30fps;                                                                                                                             |
| Frame Rate-Third Stream   | Channel * 4<br>D1 (720*576), Max 30fps;<br>640*360,Max 30fps;<br>2CIF(704*288), Max 30fps;<br>CIF(352*288), Max 30fps;                                                                                                                                                                                              |
| Frame Rate Recommendation | Channel * 4<br>2880*1620@30fps+1080P@30fps+D1@30fps                                                                                                                                                                                                                                                                 |
| Video Bit Rate            | 128 Kbps ~ 16 Mbps * 4Channel                                                                                                                                                                                                                                                                                       |
| U-code                    | Support                                                                                                                                                                                                                                                                                                             |
| ROI                       | Support                                                                                                                                                                                                                                                                                                             |
| Video Stream              | Triple streams                                                                                                                                                                                                                                                                                                      |
| OSD                       | Up to 10 OSDs * 4 Channel                                                                                                                                                                                                                                                                                           |
| Privacy Mask              | Up to 8 * 4Channel                                                                                                                                                                                                                                                                                                  |
| Audio                     |                                                                                                                                                                                                                                                                                                                     |
| Audio Compression         | G.711U, G.711A                                                                                                                                                                                                                                                                                                      |
| Two-way Audio             | Support                                                                                                                                                                                                                                                                                                             |
| Sampling Rate             | 8 kHz                                                                                                                                                                                                                                                                                                               |
| Interface                 |                                                                                                                                                                                                                                                                                                                     |

|                       |                                                                                                  |
|-----------------------|--------------------------------------------------------------------------------------------------|
| Audio I/O             | 1 Input: impedance 1 kΩ, amplitude 2.5 V [p-p], 1 Output: impedance 600 Ω, amplitude 2.5 V [p-p] |
| Alarm I/O             | 3/2                                                                                              |
| Built-in Mic          | Support                                                                                          |
| Network               | 1 × RJ45 10 M/100 M/1000 M Base-TX Ethernet                                                      |
| Other                 |                                                                                                  |
| Corridor Mode         | Support                                                                                          |
| Certification         |                                                                                                  |
| Protection            | IP67 (IEC 60529), IK10 (IEC 62262)                                                               |
| General               |                                                                                                  |
| Power                 | DC 24V±25%, AC 24V±25%, PoE (IEEE802.3bt)                                                        |
| Built-in DC12V Output | Support                                                                                          |
| Power Consumption     | Max 31W                                                                                          |
| Power Interface       | Wires with cold-pressed terminal                                                                 |
| Dimensions            | Φ 318 x 136.6 mm (Φ 12.52" x 5.38")(Φ x H)                                                       |
| Weight                | 4.77Kg (10.52lb)                                                                                 |
| Working Environment   | -30 °C ~ 60 °C (-22 °F ~ 140 °F), Humidity: 5%~95% RH                                            |
| Storage Environment   | -40 °C ~ 70 °C (-40 °F ~ 158 °F), Humidity: 5%~95% RH                                            |
| Surge Protection      | 6 KV                                                                                             |

## Dimensions



## Accessories

TR-UF45-K-IN

Four Eyes Multi-directional Camera Ceiling Mounting/Wall Mounting Adapter



TR-CE45-IN

Dome Indoor Ceiling Mounting Bracket



TR-WE45-B-IN

Dome Gooseneck Bracket



## TR-WE45-A-IN

Long Wall Mounting Bracket for Dome



## TR-UC08-A-IN

Dome Corner Mounting Bracket



## TR-UC08-B-IN

Aluminium Alloy Corner Mounting Bracket



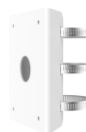
## TR-UP08-A-IN

Dome Pole Mounting Bracket



## TR-UP08-B-IN

Aluminium Alloy Pole Mounting Bracket



### Zhejiang Uniview Technologies Co., Ltd.

No. 369, Xietong Road, Xixing Sub-district, Binjiang District, Hangzhou City, 310051, Zhejiang Province, China (Zhejiang) Pilot Free Trade Zone, China

Email: [overseasbusiness@uniview.com](mailto:overseasbusiness@uniview.com); [globalsupport@uniview.com](mailto:globalsupport@uniview.com)

<http://www.uniview.com>

©2024-2025 Zhejiang Uniview Technologies Co., Ltd. All rights reserved.

\*Product specifications and availability are subject to change without notice.

\*Despite our best efforts, technical or typographical errors may exist in this document. Uniview cannot be held responsible for any such errors and reserves the right to change the contents of this document without prior notice.