

Digital Video Recorder

XVR302-32Q3



Features

- Support H.265/H.264 video formats
- Support audio over coaxial cable(only for Uniview CVI protocol cameras)
- Support TVI, AHD, CVI, CVBS, IP cameras with adaptive access
- 32-channel BNC input
- Support 1-ch CVBS output, 1-ch VGA output, 1-ch HDMI output at up to 4K(3840 x 2160)
- HDMI and VGA simultaneous output
- Long transmission distance over coaxial cable
- Support mainstream cameras of ONVIF and RTSP protocols

Specifications

| | |
|--------------------|-------------|
| Model | XVR302-32Q3 |
| Video/Audio Input | |
| IP Video Input | 4-ch |
| Analog Video Input | 32-ch, BNC |
| Max IP Video Input | 36-ch |

| | |
|-------------------------------|---|
| Supported Analog Camera Types | <p>Support AHD input:</p> <p>8MP@15fps 5MP@20fps 4MP@30fps 1080P@30fps 720P@30fps</p> <p>Support TVI input:</p> <p>8MP@15fps 5MP@20fps 4MP@30fps 1080P@30fps 720P@30fps</p> <p>Support CVI input:</p> <p>8MP@15fps 5MP@25fps 4MP@30fps 1080P@30fps 720P@30fps</p> <p>Support CVBS input</p> |
| BNC Audio Input | 32-ch, channel audio |
| RCA Audio Input | 1-ch |
| Video/Audio Output | |
| HDMI Output | HDMI: 4K (3840 × 2160)/30 Hz, 1920 × 1080/60 Hz, 1920 × 1080/50 Hz, 1600 × 1200/60 Hz, 1280 × 1024/60 Hz, 1280 × 720/60 Hz, 1024 × 768/60 Hz |
| VGA Output | VGA: 1920 × 1080/60 Hz, 1920 × 1080/50 Hz, 1600 × 1200/60 Hz, 1280 × 1024/60 Hz, 1280 × 720/60 Hz, 1024 × 768/60 Hz |
| BNC Video Output | 1-ch |
| RCA Audio Output | 1-ch |
| Live View Display | HDMI/VGA: 1/4/6/8/9/25/36 |
| Encoding/Decoding | |
| Recording Resolution | 8MP Lite/5MP Lite/4MP Lite/1080P/720P/D1 |
| Recording Frame Rate | <p>Main stream: 8MP Lite@8fps Sub stream: D1@8fps</p> <p>Main stream: 5MP Lite@12fps Sub stream: D1@12fps</p> <p>Main stream: 4MP Lite@15fps Sub stream: D1@15fps</p> <p>Main stream: 1080P@15fps Sub stream: D1@15fps</p> <p>Main stream: 720P@30fps Sub stream: D1@30fps</p> |
| Audio Sample Rate | 8 kHz, 16 bit per channel |
| Audio Bit Rate | 64 Kbps per channel |

| | |
|-------------------------------------|---|
| Decoding Capability | Analog: 16 x 8MP Lite@8, 16 x 5MP Lite@12, 16 x 4MP Lite@15, 16 x 1080P@15, 16 x 720@30 IP: 2 x 8MP@30, 4 x 4MP@30, 8 x 1080P@30, 16 x 720P@30 |
| Num of Concurrent Playback in Local | 16-ch |
| Coaxial Cable | |
| Audio over Coaxial Cable(Form) | 32-ch, One-way Audio(only for Uniview CVI protocol cameras) |
| Two-way Audio | |
| Two-way Audio | 1-ch, RCA (Using the audio input and output) |
| Analog Snapshot | |
| FTP/Schedule/Event Snapshot | Schedule/FTP/Event snapshot:32-ch snapshot, up to 704*576 resolution |
| Network | |
| Incoming Bandwidth | 80Mbps (Up to 144Mbps after all analog channel conversion) |
| Outgoing Bandwidth | 160Mbps |
| Remote Users | 128 |
| Protocols | TCP/IP, P2P, UPnP, DHCP, HTTP, HTTPS, DNS, DDNS, SMTP, NTP |
| Browser(Plugin) | IE10, IE11, Chrome 45+, Edge 79+, Firefox 52+ |
| Smart | |
| Analog Smart by XVR | SIP (Intrusion Detection, Cross Line Detection, Enter Area, Leave Area), Ultra Motion Detection (UMD) |
| IP Smart by IPC | Face Detection, SIP (Intrusion Detection, Cross Line Detection, Enter Area, Leave Area), Defocus Detection, Scene Change Detection, Object Removed, Object Left Behind, Auto Tracking |
| VCA Search | Face Search, Behavior Search |
| Smart Functions by XVR | 16-ch (UMD), 8-ch (SIP) |
| Alarm | |
| General Alarm | Motion |
| Alert Alarm | IP Conflict, Network Disconnected, Disk offline, Disk Abnormal, Illegal Access, Hard Disk Space Low, Hard Disk Full, Recording/Snapshot Abnormal |
| GUI Language | |
| GUI Language | 38 languages: Simplified Chinese, Traditional Chinese, English, Vietnamese, Thai, Turkish, Spanish (Latin America), Portuguese (Brazil), Spanish, Portuguese, French, German, Italian, Dutch, Polish, Czech, Hungarian, Slovak, Russian, Hebrew, Arabic, Ukrainian, Estonian, Bulgarian, Greek, Romanian, Danish, Swedish, Norwegian, Finnish, Croatian, Slovenia, Serbia, Korean, Japanese, Latvian, Lithuanian, Persian |

Hard Disk

| | |
|----------|---|
| SATA | 2 SATA interfaces |
| Capacity | Up to 16 TB for each HDD (The maximum HDD capacity varies with environment temperature) |

External Interface

| | |
|-------------------|---|
| Network Interface | 1 RJ45 10 M/100 M/1000 M self-adaptive Ethernet Interface |
| USB | Rear panel: 1 × USB3.0, Front panel: 1 × USB2.0 |
| RS485 | 1 |
| Alarm In | 4-ch |
| Alarm Out | 1-ch |
| Power Supply | DC 12 V/5 A |

Working Environment

| | |
|---------------------------------|------------------------------------|
| Working Temperature | -10 °C to 55 °C (14 °F to 131 °F) |
| Working Humidity | ≤ 90% RH (non-condensing) |
| Power Consumption (without HDD) | ≤ 38W |

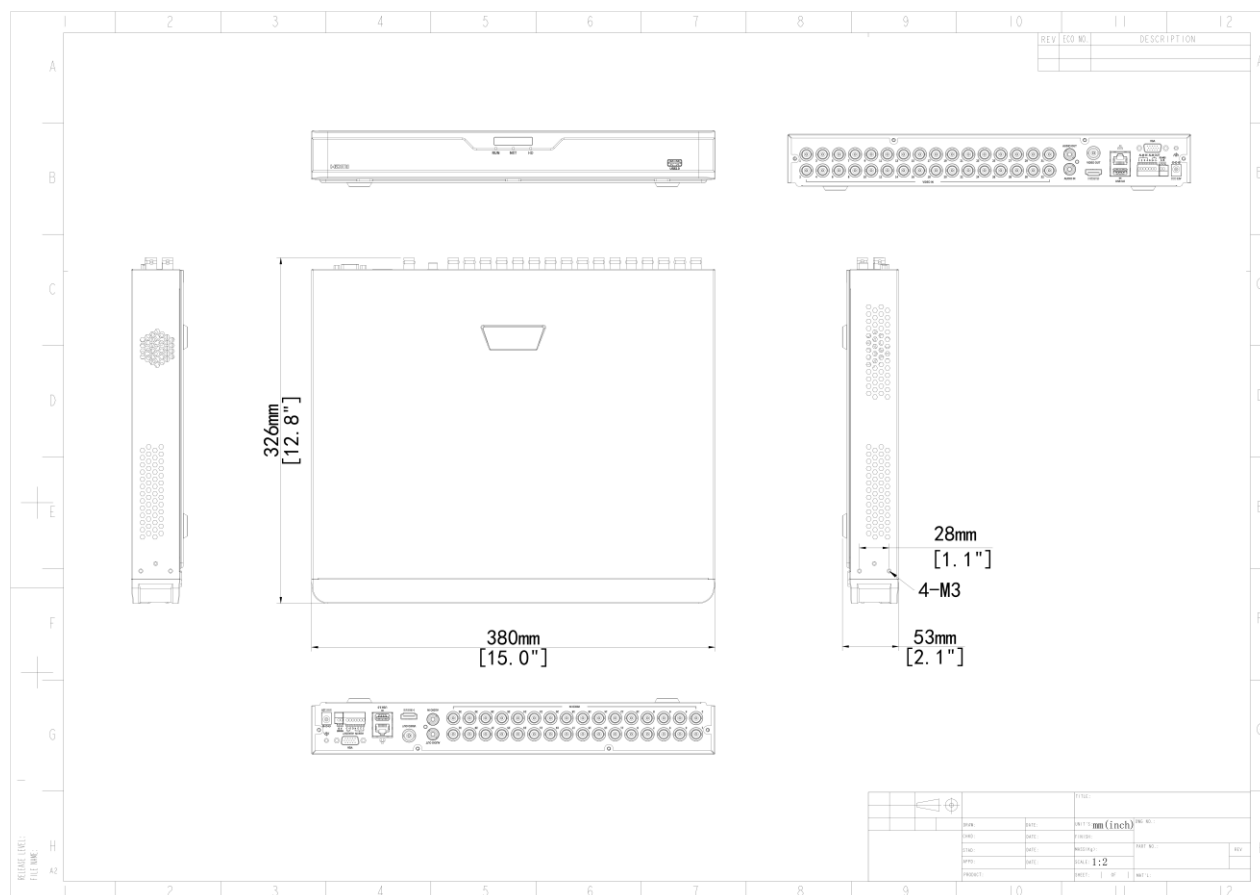
Dimensions

| | |
|----------------------|--|
| Weight (without HDD) | ≤2.6 Kg (5.72lb) |
| Dimensions | 380mm ×326mm×53mm (15.0" × 12.8"×2.1") |

Certification

| | |
|---------------|--|
| Certification | CE, FCC, UL, RoHS, WEEE |
| CE | EN 55032, EN 61000-3-3, EN IEC 61000-3-2, EN 55035 |
| FCC | Part15 Subpart B |

Dimensions



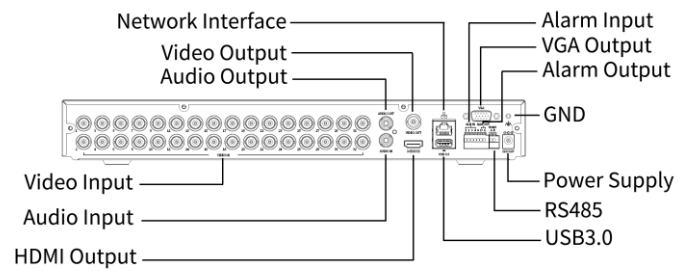
Accessories

RM-1U-380

2 HDD 1U NVR Rack Mount



Rear Panel



Zhejiang Uniview Technologies Co., Ltd.

No. 369, Xietong Road, Xixing Sub-district, Binjiang District, Hangzhou City, 310051, Zhejiang Province, China (Zhejiang) Pilot Free Trade Zone, China

Email: overseasbusiness@uniview.com; globalsupport@uniview.com

<http://www.uniview.com>

©2023-2025 Zhejiang Uniview Technologies Co., Ltd. All rights reserved.

*Product specifications and availability are subject to change without notice.

*Despite our best efforts, technical or typographical errors may exist in this document. Uniview cannot be held responsible for any such errors and reserves the right to change the contents of this document without prior notice.